
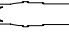



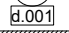
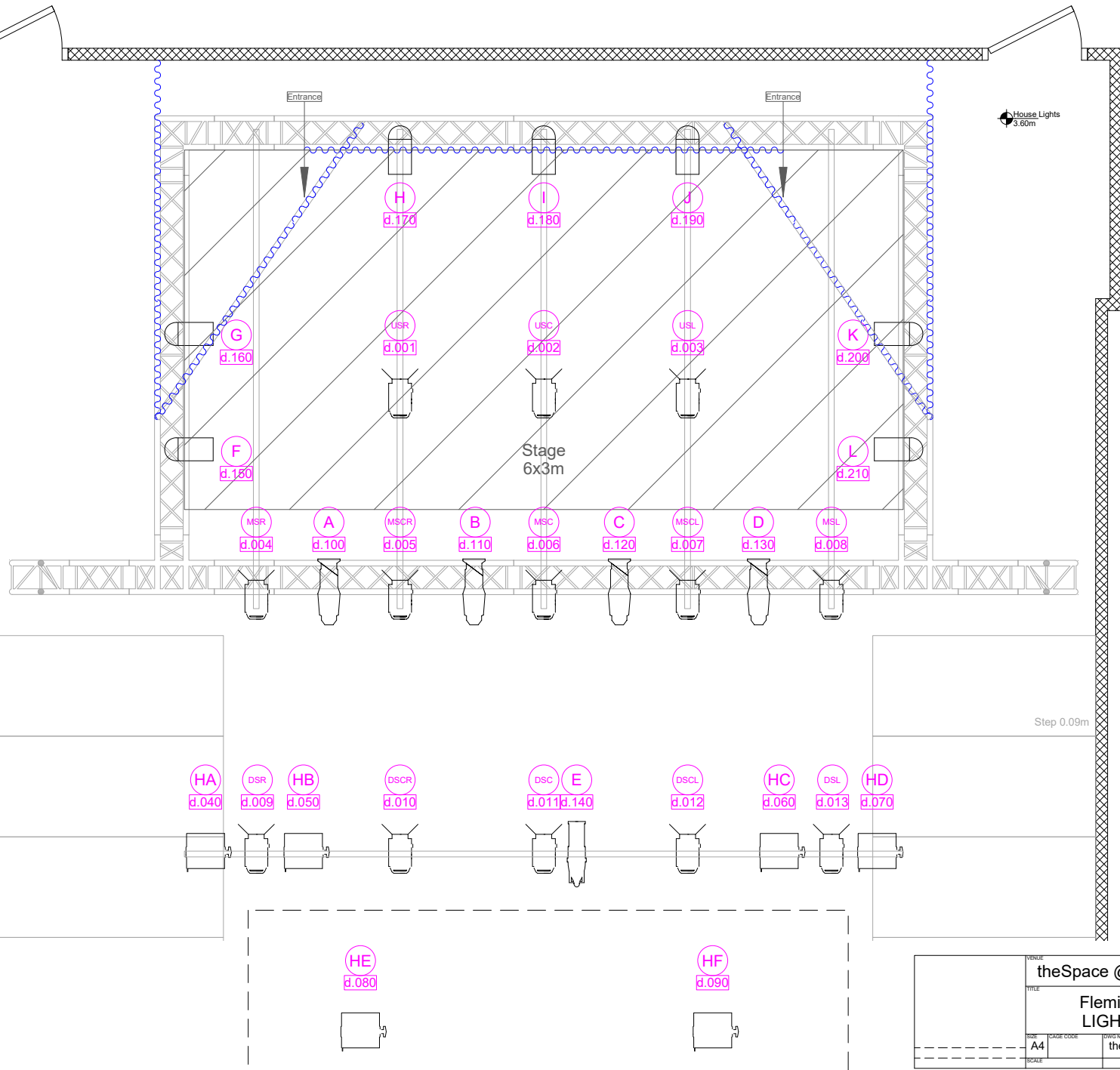
	Chauvet Colordash Par-H12 Mode: 8ch P 5p
	Briteq 100EC Fresnel Mode: 1ch P 5p & 3p
	Colorsource Zoom 15/30 Mode: DIR (6ch) T 5p
	Colorsource Zoom 25/50 Mode: DIR (6ch) T 5p
	Showtec Chameleon Flood Mode: 4ch T 3p
	Fixture Number
	DMX Address



REVISE	theSpace @ Surgeons' Hall		
TITLE	Fleming Theatre LIGHTING Plan		
SIZE	CAGE CODE	DWG NO	REV
A4		theSpaceUK-VP-26-18	25.1
SCALE		SHEET	